

# MÄTTMÄN

c o m b i





## Small, yellow and versatile...

### Data logger with exchangeable sensors

Mätman Combi is the right tool – to log different types of data.

It is battery operated and very easy to use.

There are a number of accessories for Mätman Combi, e.g. clip-on current transformer, AC voltage sensor, different kinds of temperature sensors and signal adapters.

Change the sensor and Mätman can be used in a completely new area of application!

### Example of accessories:

Voltage sensor 230 V AC



Clip-on current transformer, 0–200 A



Adapter 18540 with connection block for 0–10 V or 0–20 mA

Temperature sensors, with 1 m cable, Part No 18521, -35° to +140°C

Thousands of satisfied users in real estate, energy distribution, food industry and electrical installations have already discovered the advantages of Mätman Combi.

Mätman Combi is the basis of our popular data acquisition units, *Energy-* and *Real Estate Analysis Kits* (see separate leaflets).

Retailer:

*Energy – Mätman makes it easy to control measured data like voltage, current and temperature.*

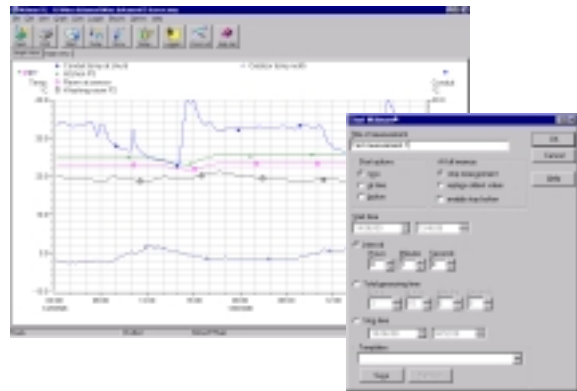


*Real Estate – Register temperatures, current, voltage or other measured data from transmitters in real estates.*



### Mätman XL 3

Our new powerful 32-bit software, Mätman XL 3, is the most advanced data acquisition software, with all the latest in software technology. Characteristics of the program are simplicity of operation combined with high performance.



### Technical data Mätman Combi

- Programmable or manual start/stop or "wrap around" memory.
- The sensors can be calibrated/adjusted with the Mätman XL3 program.
- 12 bit A/D converter.
- Name (any name can be given as identifier), Time and Date of each measurement is stored.
- Sampling intervals can be set from 1 second to 12 hours.
- An intermittent flashing LED indicates sampling.
- Working temperature range: -30°C to +70°C.
- Battery life – at least one year, easy to replace.
- Size 42 x 97 x 26 mm.
- Weight: 50 g. excluding sensor.