

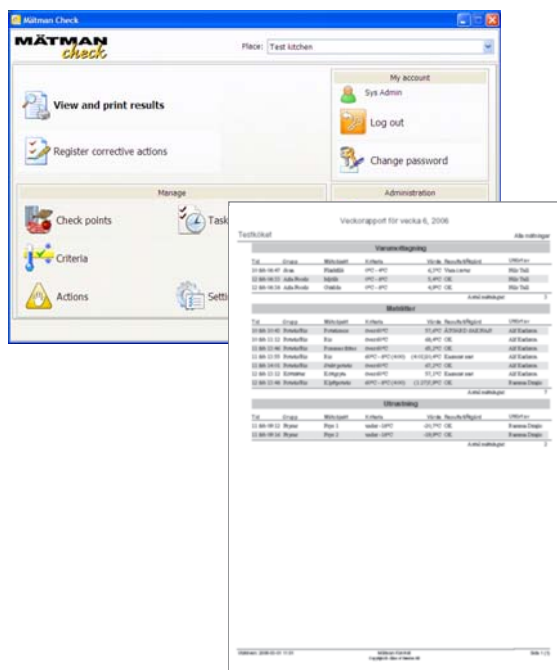
MÄTMAN[®] *check*

makes your own-check routines simple



ELTEX
OF SWEDEN

Mätman Check will provide you with full documentation of your own-check work!



Advantages with Mätman Check

- very easy to handle
- complete documentation of all checks
- handles corrective actions according to HACCP
- reminding function for daily own check routines
- no more reports written by hand
- clear presentation of measured values and report printouts
- fulfils authority demands
- Swedish design

Own-check according to HACCP

According to the new EU regulation EC 852/2004 the food operator must have a routine for own-check based on the principles in HACCP (Hazard Analysis and Critical Control Point). This means that you identify the steps of your activities which are critical from a food hygienic point of view and supervises the food handling so that the health risks will be decreased or completely eliminated.

Temperature monitoring is one of the basic conditions for own-check routines based on HACCP.

Technical data

	12121	12123
Sensor:	thermistor	thermocouple
Measuring range:	-40°C...+120°C	-50°C...+270°C
Accuracy:	±0,5°C within -30°C...+70°C	±1°C within -30°C...+70°C
Working temp.:	-20°C...+60°C	-20°C...+50°C
Class:	EN13485, air, product, S, E, 1, -40°C...+120°C	EN13485, air, product, S, E, 1, -50°C...+270°C
Display type:	LCD	OLED, illuminated
Dim. hand-held unit:	135 x 67 x 30 mm	160 x 67 x 30 mm
Weight excl. sensor:	134 g	147 g
Encapsulation class:	IP65	IP65
Battery:	2 x AAA / LR03	2 x AAA / LR03
Runtime, rest:	12 months	12 months
contin. measuring:	up to 280 h	up to 50 h
10 meas/day+sync:	up to 270 days	up to 140 days
IrDA-port for communication		
Alarm for weak battery		

Does your own-check routine take too much time? Mätman Check will give you more time for other work!

Mätman Check is a system for temperature measurements and registration of corrective actions at:

- goods reception
- heating, warming and cooling of food
- cold storing
- dishwashing

The concept consists of:

- A hand-held unit
- A penetration probe
- A wire probe
- Software
- Calibration certificate



Functions	Mätman	Mätman
	Check Classic 12121	Check HACCP 12123
Temperature measurement	x	x
Documentation of corrective actions	x	x
Possibility for extra comments on corrective actions	x	x
Documentation of hygiene inspections	x	x
Illuminated display	–	x
Thermocouple sensor for faster response	–	x
Calendar function with reminder	–	x
Audible confirmation of completed measurement	–	x
Database handles multiple measuring locations	x	x
Integration with Mätman loggers	x	x

Accessories and services for Mätman Check

- **IrDA unit** for the communication between hand unit and PC, Eltex part no. I8892.
When do you need an external IrDA unit? If you do not have a built-in IrDA unit in your computer. Stationary computers rarely have built-in IrDA units. Laptops often have built-in IrDA units.
- **USB memory** for Mätman Check Backup, Eltex part no. I2090
For safety backup of all data in a simple and reliable way.
- **Calibration**
We carry out the yearly calibration according to the authority rules. At the same time we will check the condition of the instrument, so that you as a user always will have a well performing system.

About Eltex of Sweden

Eltex of Sweden is an electronics company with concentration on advanced electronics for the textile industry, acquisition of measuring data and also control and supervision of electric energy.

The company was founded in 1964 and is represented in many countries.

Mission

With our sensors for moving threads, software for own check and data acquisition, we will give the users increased productivity, quality and profit, and also contribute to a better environment.



ELTEX OF SWEDEN AB • BOX 24 • SE-283 21 OSBY • SWEDEN
TEL +46 479 536300 • FAX +46 479 536399 • EMAIL: info@eltex.se • WEB: www.eltex.se
ELTEX U.S. INC. • 13031 E. WADE HAMPTON BLVD. • GREER • SC 29651 • USA
TEL +1 864 879 2131 • FAX +1 864 879 3734 • EMAIL: sales@eltexus.com